

## Anatomy of a FluidX Next-Gen Tube - Internal Thread, Dual-Coded

FluidX Dual-Coded internal thread tubes have a range of features that are only possible with advanced manufacturing techniques. Next-Generation co-molded caps offer a far superior seal over traditional O-ring caps, which can 'pop' when a sample is frozen or the cap is overtightened.

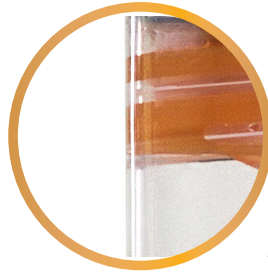
### Internal Threaded Cap:

- Automation Friendly
- Co-molding prevents o-ring 'popping'
- Our most secure internal threaded cap



### High Quality Virgin Polypropylene:

- No detectable leachables or extractables
- Manufactured from USP Class VI resin in a Class 8 clean room
- Endotoxin, DNA/RNA, heavy metals & animal free



### Clear Window:

- Allows visual inspection
- Optional space to print direct due to high quality manufacturing



### Dual-coded:

- 2D-code and Human-Readable Number (HRN) on tube base
- Enables whole rack or single tube reading
- High contrast enabling reliable reading
- Permanent laser etching



### FURTHER INFORMATION

Contact your local representative or [www.brookslifesciences.com](http://www.brookslifesciences.com)

Automated  
Storage Systems

Cryopreservation &  
Cold Chain Solutions

Informatics &  
Technical Solutions

Sample Storage,  
Lab Services & Transport

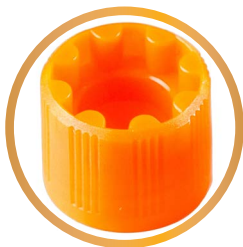
Sample Consumables  
& Instruments

## Anatomy of a FluidX Next-Gen Tube - External Thread, Tri-Coded

The FluidX Next-Gen Tri-Coded tube with external thread cap offers our most secure seal. This highly secure design also offers significant benefits over internal thread caps including, a higher working volume.

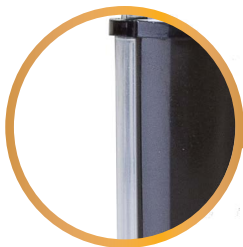
### External Threaded Cap:

- Automation friendly
- Our most secure cap
- Enables greater working volume
- Designed to prevent over tightening



### High Quality Virgin Polypropylene:

- No detectable leachables or extractables
- Manufactured from USP Class VI resin in a Class 8 clean room
- Endotoxin, DNA/RNA, heavy metals & animal free



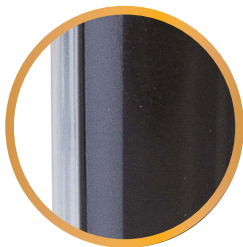
### Side Coding:

- Linear Barcode
- Human Readable Number
- Permanent laser etching



### Clear Window:

- Allows visual inspection
- Optional space to print direct due to high quality manufacturing



### 2D Coded:

- Enables whole rack or single tube reading
- High contrast enabling reliable reading
- Permanent laser etching



### FURTHER INFORMATION

Contact your local representative or [www.brookslifesciences.com](http://www.brookslifesciences.com)

Automated  
Storage Systems

Cryopreservation &  
Cold Chain Solutions

Informatics &  
Technical Solutions

Sample Storage,  
Lab Services & Transport

Sample Consumables  
& Instruments

Learn more – [www.brookslifesciences.com](http://www.brookslifesciences.com)

Contact us – [www.brookslifesciences.com/contact-us](http://www.brookslifesciences.com/contact-us)

© Copyright 2018 Brooks Automation, Inc. B254-18 Dec 20

## Anatomy of a FluidX Next-Gen Tube - External Thread, Dual-Coded

The FluidX Next-Gen Dual-Coded tube with external thread cap offers our most secure seal. This highly secure design also offers significant benefits over internal thread caps including, a higher working volume.

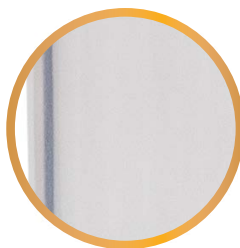
### External Threaded Cap:

- Automation friendly
- Our most secure cap
- Enables greater working volume
- Designed to prevent over tightening



### High Quality Virgin Polypropylene:

- No detectable leachables or extractables
- Manufactured in ISO Class 8 clean-room environment
- Endotoxin, DNase/RNase, heavy metals & animal free



### Clear Window:

- Allows visual inspection
- Optional space to print direct due to high quality manufacturing



### Dual-Coded:

- 2D-code and Human-Readable Number (HRN) on tube base
- Enables whole rack or single tube reading
- High contrast enabling reliable reading
- Permanent laser etching



### FURTHER INFORMATION

Contact your local representative or [www.brookslifesciences.com](http://www.brookslifesciences.com)

Automated  
Storage Systems

Cryopreservation &  
Cold Chain Solutions

Informatics &  
Technical Solutions

Sample Storage,  
Lab Services & Transport

Sample Consumables  
& Instruments