

Academic Medical Research Institute Saves Time and Minimizes Risk and Downtime

SCOPE

A multi-phase move project included the transport of biological research material across busy city streets to a new facility located some three miles away. The scientific transport division of Brooks Life Sciences was hired to relocate all chemicals, biological material, cold-room contents, drosophila (fruit flies), and mice.



**2.7 MILES ACROSS
BUSY CITY STREETS**

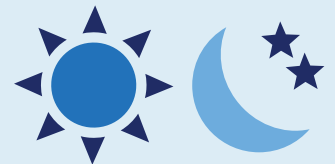
**MULTIPLE LABS
FROM 10 SITES**



**MULTIPLE
PHASES OVER
11 MONTHS**



**SEVERAL
TRIPS A DAY**



**250+
FREEZERS AND
REFRIGERATORS**



**1,000s
CAGES OF MICE**



**1,000s
RACKS OF
FRUIT FLIES**



RESULTS

Custom-built trucks equipped with redundant electrical power were used to ensure all freezers and refrigerators remained at-temperature throughout the entire relocation process. Trucks are also climate-controlled to enable transport of cold-room material, fruit flies, and mice – while maintaining the correct environment for each.

Highly trained and experienced relocation professionals understand regulatory compliance, the complexity of sustaining precise temperature parameters, and the importance of each sample. The team executed the entire move successfully – despite the challenge of transporting valuable material through intricate traffic and construction zones in busy, downtown city streets.